

Williams Petroleum Services, LLC

One Williams Center
P.O. Box 3483
Tulsa, OK 74101-3483
918/573-2600

April 2, 2015

Mr. Kenneth Herstowski, P.E.
Environmental Protection Agency, Region 7
AWMD/WRAP/MIRP
11201 Renner Boulevard
Lenexa, Kansas 66219

Re: Quarterly Update – 1st Quarter 2015
Former Augusta Refinery (FAR) RCRA Facility Investigation (RFI)
Williams Petroleum Services (WPS), LLC
Augusta, Kansas – KSD007235138

Dear Mr. Herstowski:

This letter is offered as the report of investigation activities at the Former Augusta Refinery (FAR) in accordance with Section X, "Reporting," of the Administrative Order on Consent dated October 24, 2003, Docket No. RCRA-07-2004-0009. This report addresses activities occurring during the period of January 1 through March 31, 2015.

Description of Activities

- In correspondence dated February 4, 2015, submitted the Sampling and Analysis Plan (SAP) to USEPA for the completion of the 2015 groundwater monitoring event.
- In accordance with the August 12, 2014 LNAPL CMS Work Plan Addendum, continued to monitor the LNAPL thickness and recovery in wells with ongoing removal by passive skimmers and bailing.
- Per the SWMU-16 CMS Work Plan scope of work dated August 12, 2014, supplemental process sewer figures were identified in archived files and GIS figures updated for SWMU-16 evaluation. Field verification of historical seal locations with the updated information was completed the week of March 16, 2015.
- Downloaded transducer data and collected water levels as part of the continued Water Balance evaluation through the ongoing monitoring of water level data per the September 11, 2013 scope of work.
- In email correspondence dated March 4, 2015, USEPA requested that dissolved oxygen and redox potential be added as stabilization parameters in the groundwater monitoring SAP. This request was incorporated into the SAP.
- During the week of March 16, 2015, monitor well gauging activities were completed.

- During the week of March 23, 2015, monitor well sampling activities were initiated.

Summary of All Findings

- Data collection for the LNAPL CMS Work Plan Addendum is an on-going process being performed over time to include seasonal factors in overall evaluation. Final data for the evaluation will be provided in the CMS for the FAR.
- Final data collected for the Water Balance CMS Work Plan scope will be presented in the CMS for the FAR. Interim evaluation data will be provided with the 2015 groundwater monitoring program report.
- Data collected from the SWMU-16 CMS Work Plan is being evaluated to determine strategies for interim measures implementation. A revised depiction of the historical locations and routing of the SWMU-16 Process Sewer system is attached as **Figure 1**. This figure represents historical locations of the process sewer system and is not representative of what remains at the site currently.

Summaries of All EPA Approved Changes

None.

Summaries of All Contacts

- On January 6, 2015, WPS submitted the 4th quarter 2014 update to the EPA.
- In correspondence dated February 4, 2015, submitted the Sampling and Analysis Plan (SAP) to USEPA for the completion of the 2015 groundwater monitoring event.

Summaries of Problems Encountered

None.

Actions to Rectify Problems

None.

Changes in Key Project Entities

None.

Projected Work for the Next Reporting Period

The following activities will be performed or initiated during the next reporting period:

- Prepare the 2015 groundwater monitoring report.
- Continue work on the LNAPL monitoring evaluation for the CMS.
- Continue work on the water balance evaluation for the CMS.
- Continue work on the SWMU-16 evaluation for the CMS.
- Continue work on the Walnut River AOI Interim Corrective Measures.

Williams Petroleum Services, LLC

Other Relevant Documentation

None

I certify that this document and all attachments were prepared under my direction or supervision in accordance with a system designed to evaluate the information submitted. I certify that the information contained in or accompanying this submittal is true, accurate, and complete. As to those identified portion(s) of this submittal for which I cannot personally verify the accuracy, I certify that this submittal and all attachments were prepared in accordance with the procedures designed to ensure that qualified personnel properly gathered and evaluated the information submitted. Based on my inquiry of the person or persons who manage the system, or those directly responsible for gathering the information, or the immediate supervisor of such person(s), the information submitted is, to the best of my knowledge and belief, true, accurate, and complete. I am aware that there are significant penalties for submitting false information, including the possibility of fine and imprisonment for knowing violations.

Please provide all written correspondence regarding this Quarterly Update directly to Mr. John Carey, III with Williams Petroleum Services, LLC. If you have any questions, do not hesitate to contact Mr. Carey at (918) 573-8215.

Sincerely,

Williams Petroleum Services, LLC

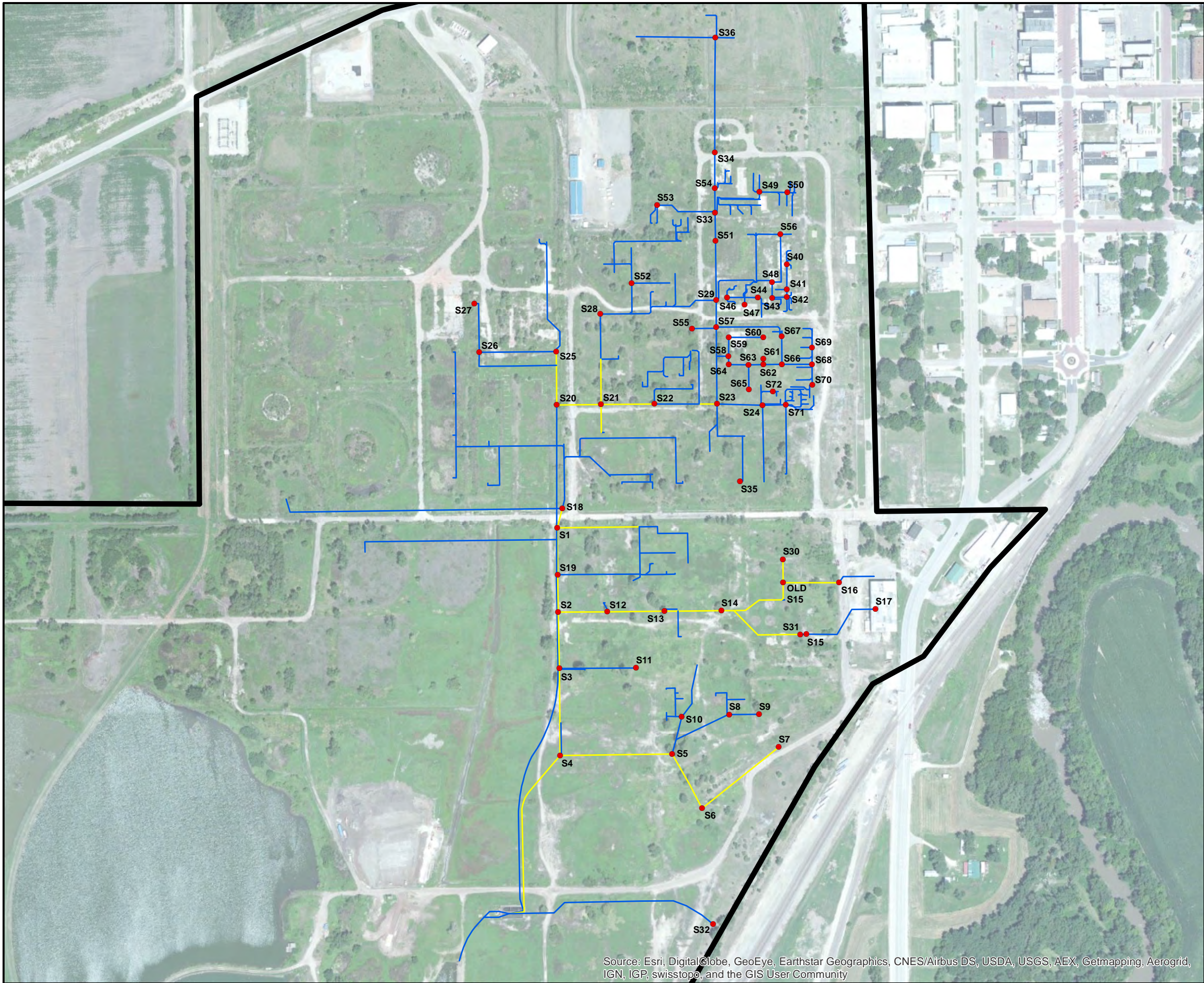


Mark A. Gebbia

Director, Environmental Services

cc: John Carey, III, Williams Petroleum Services, LLC
David Way, CB&I Environmental & Infrastructure, Inc.

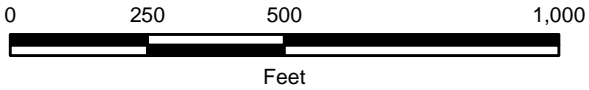
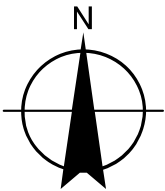
G:\Williams_Augusta\GIS_Workspace\Decoteau_Colby\Documents_temp\WFAR_SWMU-16.mxd; Analyst: ; Date: 4/2/2015 1:15:10 PM



Source: Esri, DigitalGlobe, GeoEye, Earthstar Geographics, CNES/Airbus DS, USDA, USGS, AEX, Getmapping, Aerogrid, IGN, IGP, swisstopo, and the GIS User Community

Legend

- Sewer Seals
- Sewer System
- Sewer System Camera
- Facility Boundary



CB&I Environmental & Infrastructure, Inc.
6380 S. Fiddler's Green Circle, Suite 310
Greenwood Village, CO 80111

FIGURE
NUMBER
1

**SWMU-16
FAR Process Sewer**

**FORMER AUGUSTA REFINERY
WILLIAMS PETROLEUM SERVICES**